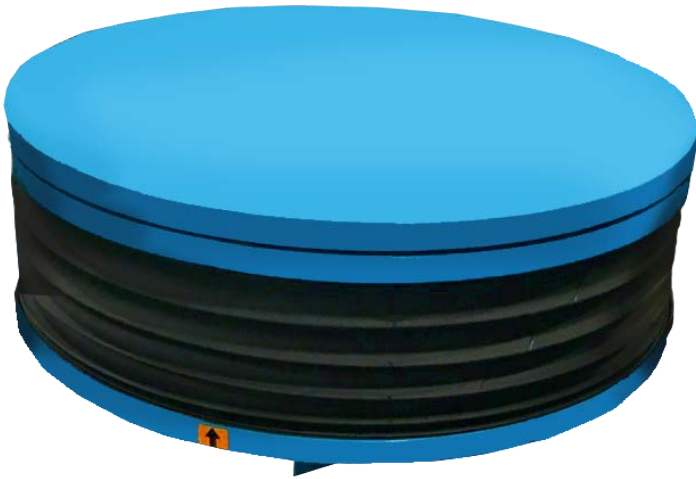


## ELECTRIC ROUND LIFT TABLE with safety curtain

### Features

- Heavy duty cylinders with drainage system and check valve to stop the lift table lowering in case of hose burst
- Foot pedal switch control lifting and lowering height more convenient for operator
- Built-in turnable allows simple load rotation and access to all sides



Foot pedal switch

### Specifications

Properties	LT20E-705/NU
Capacity	2000 kg.
Diameter of the platform	1200 mm.
Maximum Platform Height	700 mm.
Minimum Platform Height	300 mm.
Basement Size	920 x 930 mm.
Voltage	220V

