



1. Wall
2. Supports
3. Roof
4. Frame

Roof. Standard colours



RAL 7038 Agate gray

Walls. Standard colours



RAL 9003 Signal white RAL 5005 Signal blue



RAL 7004 Signal gray RAL 3000 Flame red

DOCK HOUSE

DOORHAN[®]

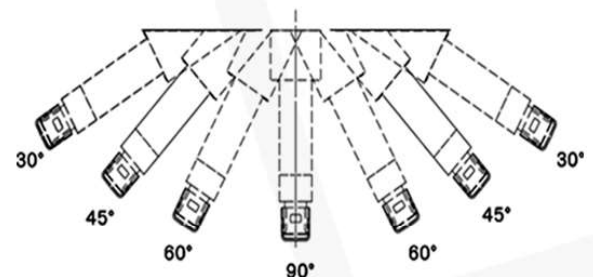
Dock house is a modular unit with an installed dock leveler and a shelter. Loading dock houses are bolted to a building's exterior to preserve microclimate, save interior floor space, and seal out unwanted contaminants. These units are ideal for temperature-controlled warehouses and distribution centres where the entire building space is used or trailers can't be parked perpendicular to the building.



Warehouses and logistics centres

DIMENSION	
Width	2800 - 2600 mm
Height	2800 - 4900 mm.
Ramp height	1200 mm. as standard
A°, Angel	90 as standard
SPECIFICATION	
Dock house, Wind Load	0.65 KN/m ²
Dock house, Operating Temp	-35 °C to +50 °C
Sandwich panel thickness	40 mm.
Corrugated sheet thickness	0.40 - 0.8 mm.

STANDARD INSTALLATION DIAGRAMS FOR EXTERNAL FRAMES





ADVANTAGES

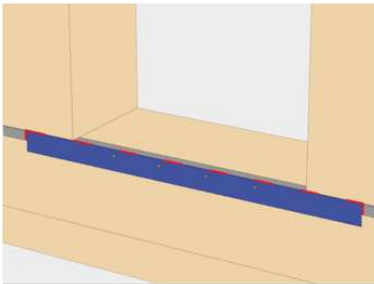


Sloping roof of the dock house guarantees precipitation be removed aside and not on the shelter or truck roof

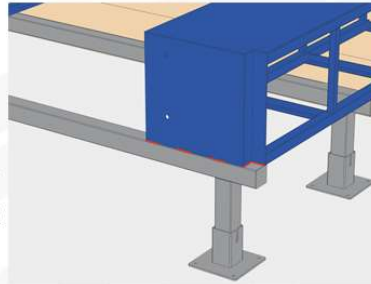


Choice of wall material : sandwich panels (energy efficiency guaranteed) or sheet metal (economical solution)

COMPLECTIONS

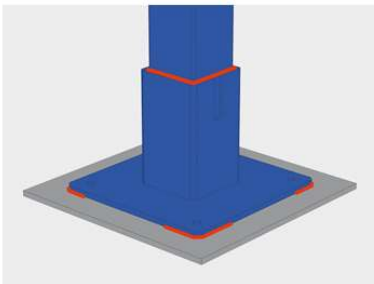


Steel plate used when building plinth is 0 mm. (building plinth is flush with building wall)



Pre - drilled holes for installation of any chosen bumper

MOUNTING



Mounting on steel embedded plates. This is a preferable type of installation including embedment of steel plates (400 x 400 mm)



Mounting on walls of different types (concrete, brick, metal, wooden, sandwich panels of 50 to 200 mm thickness).

OPERATION

- >> Carry out technical inspection and maintenance of the dock house regularly to provide its safe and smooth operation.
- >> In winter remove excess snow buildup from on top of the house, shelter and leveler. Clean the surrounding territory of the warehouse to ensure correct positioning of trailers.
- >> Speed of a parking trailer should be minimum, not more than 1 km/h (30 sm/sec).
- >> Do not drive over the house frame with forklifts and other lifting equipment. Drive only on the leveler deck and house triangle.
- >> Attention! Check bumpers for signs of wear and tear regularly. Should bumper residual thickness comprise less than 50 mm or there is no bumper material at all stop using the dock house until new bumper material is installed.

DOCK FAN

Loading dock fan is a must have for any facility with dock doors.



DOCK LIGHT

LED dock light is used to illuminate the loading dock

